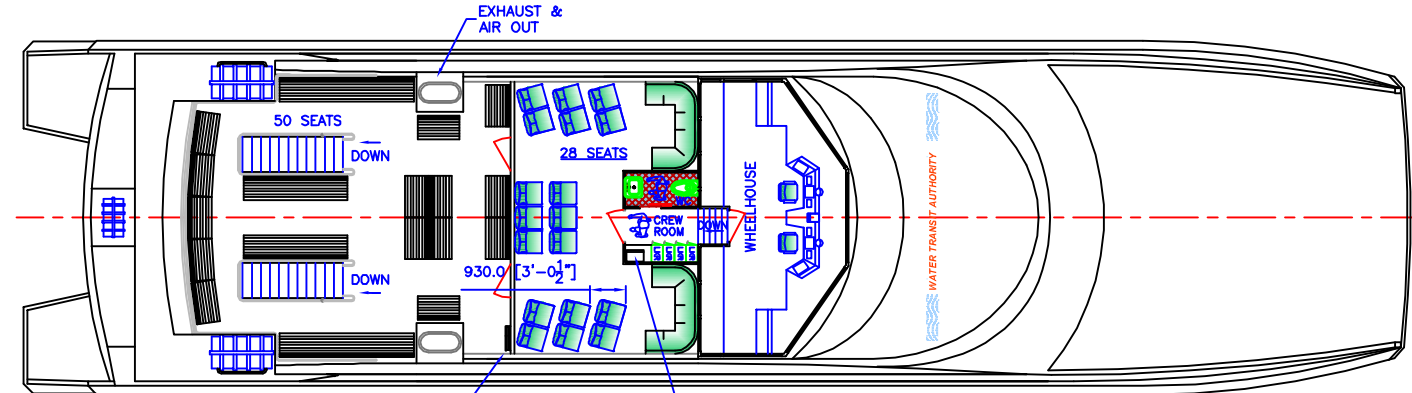
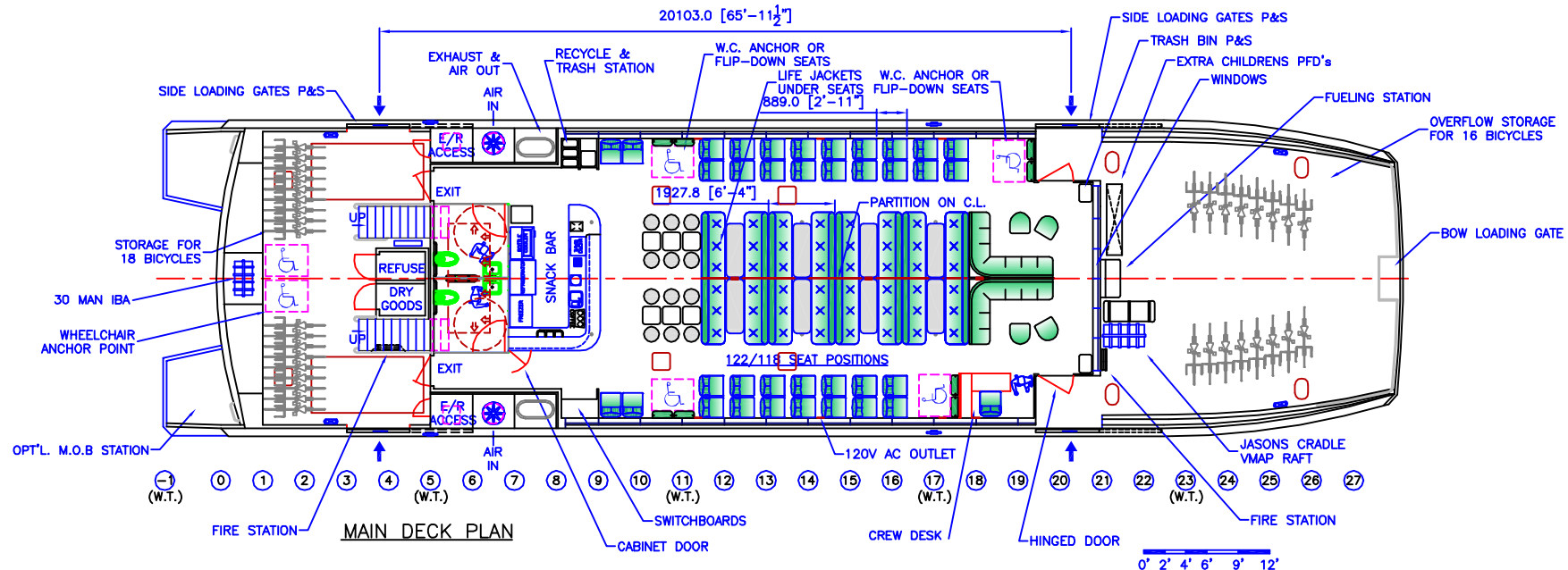


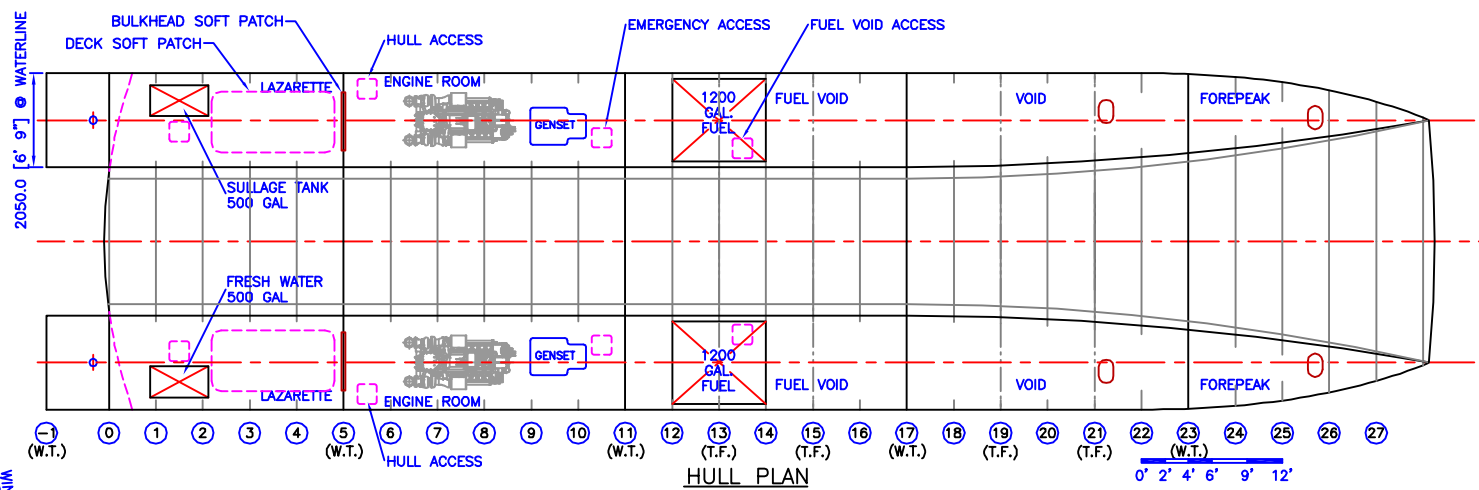
PROFILE
 (W.T.) 0 1 2 3 4 5 6 7 8 9 10 11 12 13 14 15 16 17 18 19 20 21 22 23 24 25 26 27 (W.T.)
 M.O.B. ZONE
 0' 2' 4' 6' 9' 12'



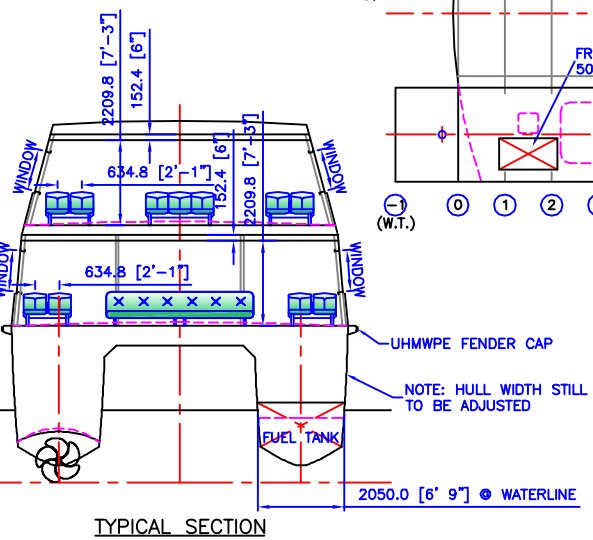
UPPER DECK PLAN
 (W.T.) 0 1 2 3 4 5 6 7 8 9 10 11 12 13 14 15 16 17 18 19 20 21 22 23 24 25 26 27 (W.T.)
 0' 2' 4' 6' 9' 12'



MAIN DECK PLAN
 (W.T.) 0 1 2 3 4 5 6 7 8 9 10 11 12 13 14 15 16 17 18 19 20 21 22 23 24 25 26 27 (W.T.)
 0' 2' 4' 6' 9' 12'



HULL PLAN
 (W.T.) 0 1 2 3 4 5 6 7 8 9 10 11 12 13 14 15 16 17 18 19 20 21 22 23 24 25 26 27 (W.T.)
 0' 2' 4' 6' 9' 12'



TYPICAL SECTION
 2050.0 [6' 9"] WATERLINE

NO.	REVISION	DRAWN	DATE	DESIGN
U	VESSEL LENGTH INCREASED	J.O.	28.09.06	116' CATAMARAN FERRY
V	SKEG REPLACED WITH V BRACKET	P.H.	21.12.06	
W	FWD RAIL, FWD DK BTWN DEMI-HULLS, INTERCEPTOR	RTF	03.01.07	
S	2 AFT DECK WC TIE DOWN REMOVED	A.T.	19.09.06	
T	UPDATED ACCORDING TO CLIENT COMMENTS	J.O.	27.09.06	
				DESCRIPTION
				GENERAL ARRANGEMENT
DIMENSIONS IN MILLIMETRES UNLESS NOTED DO NOT SCALE		SHEET NO.		DRAWN SCALE
PROPRIETARY INFORMATION - COPYRIGHT		111		P.H.
In compiling this document, Incat Crowther relies upon information supplied by a number of external sources. The document is supplied on the basis that while Incat Crowther believes all the information in it will be correct at the time of publication, it does not warrant its accuracy or completeness and to the full extent allowed by law excludes liability in contract, tort or otherwise, for any loss or damage sustained by the reader, or by any other person or body corporate arising from or in connection with the supply or use of the whole or any part of the information in this document. Incat Crowther Pty Ltd ACN 104 658 791		DESIGN NO.		CHECKED DATE
All Rights Reserved		IC0502		29.07.06
One boat only from this set of plans				



Incat Crowther

Mailing Address: PO Box 204 Newport NSW 2106 Australia

phone: +61 2 9450 0447
 fax: +61 2 9450 0494
 email: design@incatcrowther.com
 web: www.incatcrowther.com