



105' Ship Assist Tractor Tug

Hull # S-129 – M/V Guide



Specifications:

Length (Overall) 105'
 Beam (Hull) 36'
 Draft 16'-6"
 Fuel Capacity 45,426 Gallons
 Fresh Water Capacity 8,113 Gallons
 Sewage ... Type II MSD Microphor M-50
 Customer Crowley

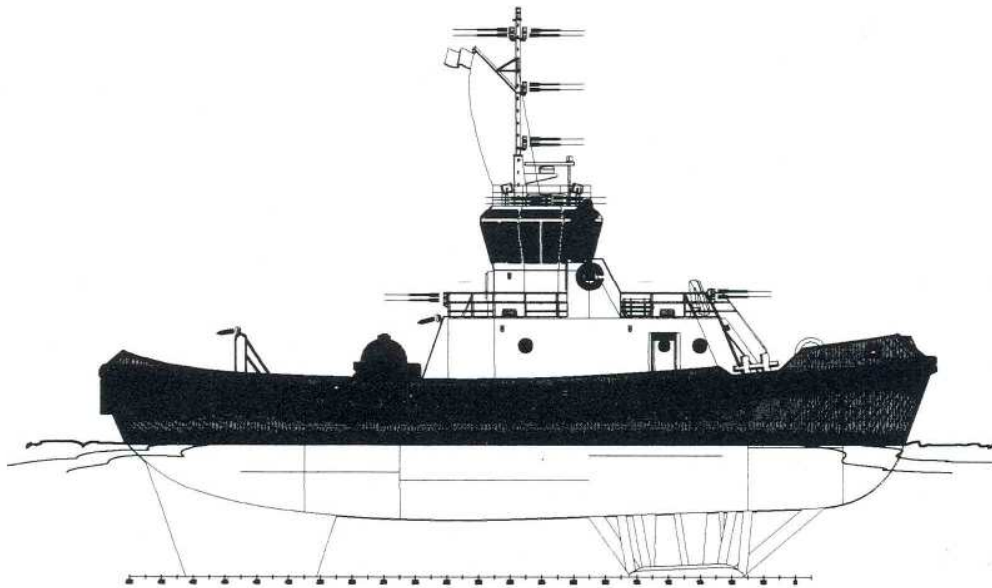
Speed 15 Knots
 Main Engines 2 x Caterpillar 3516 @ 2400 HP each
 Auxiliary Engines ... 2 x Caterpillar 3304 @ 105 KW each
 Propulsion Units ... Voith Schneider Cycloidal Drive Units
 Bollard Pull 50 tons

Accommodations:

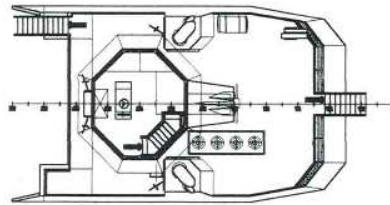
- Two staterooms, one galley, one office, and one mess room.

Deck Equipment:

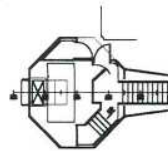
- One Mooring Winch: Markey DYSS-442
- One Hawser Winch: Markey DYSS-52
- One Deck Crane: North America Crane



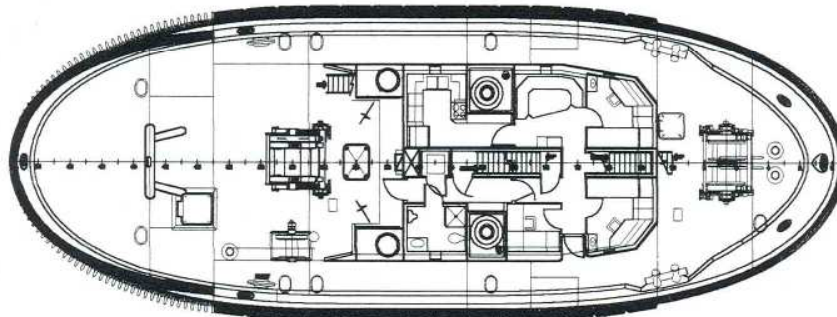
OUTBOARD PROFILE



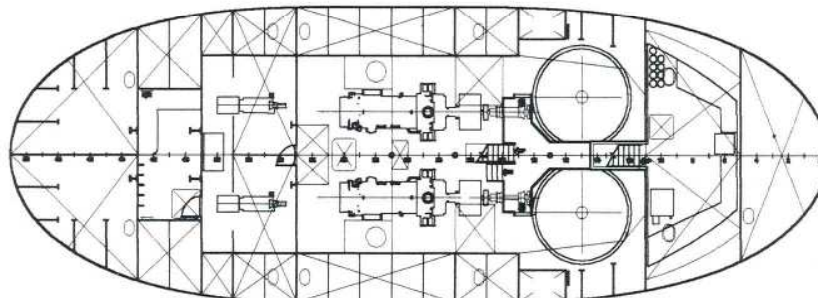
BRIDGE DECK ARRANGEMENT



DOGHOUSE ARRANGEMENT



MAIN DECK ARRANGEMENT



BELOW DECK ARRANGEMENT



Nichols Brothers Boat Builders, Inc.
Phone: (360) 331-5500 – Fax: (360) 331-7484
www.nicholsboats.com – sales@nicholsboats.com