



# 120' Ship Assist/Escort Tractor Tug

Hull # S-116 – M/V Protector



### Specifications:

Length ..... 120'  
 Beam ..... 41'-6"  
 Draft ..... 6'-11"  
 Fuel Capacity ..... 96,600 Gallons  
 Fresh Water Capacity ..... 5,200 Gallons  
 Sewage ..... Type II MSD Microphor M-100  
 Customer ..... Crowley

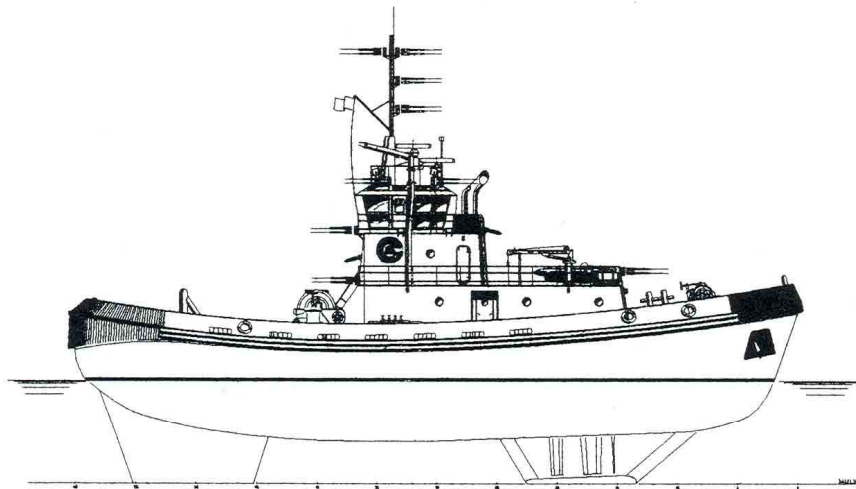
Foam System ..... Skum PI 100  
 Fire Monitors ..... Two Skum MK250/VR-250OE FL 5294 GPM  
 Bollard Pull ..... 60 tons  
 Speed ..... 15 Knots  
 Auxiliary Engines ..... 2 x Caterpillar 3304 @ 105 KW  
 Propulsion Units ..... Voith Schneider Cycloidal Drive Units  
 Main Engines ..... 2 x Caterpillar 3606 @ 2750 HP each

#### Deck Equipment:

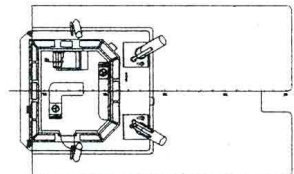
- One Winch/Windlass: Markey WYWD-20
- One Capstan: Markey CYP-80
- One Hawser Winch: Markey DYSS-52
- One Deck Crane: Alaska Marine Crane MCT420

#### Accommodations:

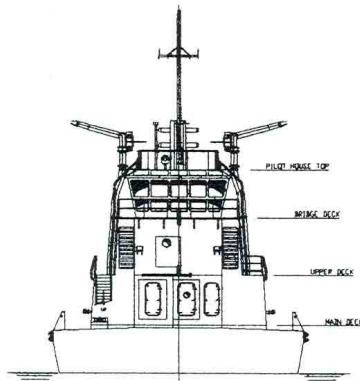
- One Captain's Stateroom
- One Engineer's Stateroom
- Two Crew Staterooms
- One Mess Room
- One Galley



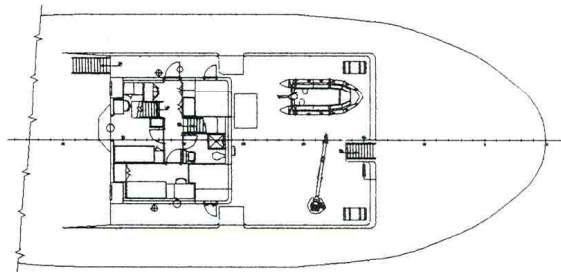
OUTBOARD PROFILE



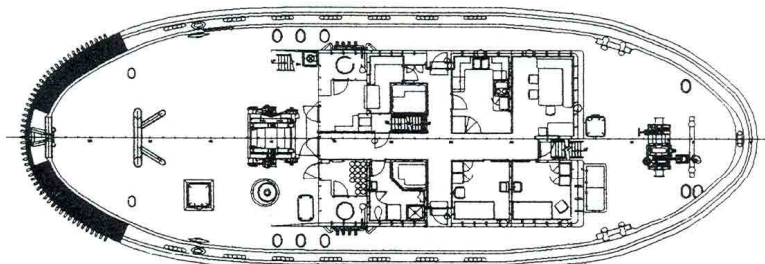
BRIDGE DECK PLAN



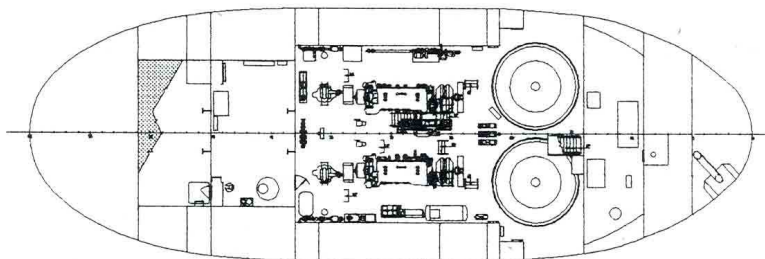
LKG FWD DECK HOUSE



UPPER DECK



MAIN DECK



HOLD



**Nichols Brothers Boat Builders, Inc.**  
Phone: (360) 331-5500 – Fax: (360) 331-7484  
[www.nicholsboats.com](http://www.nicholsboats.com) – [sales@nicholsboats.com](mailto:sales@nicholsboats.com)