



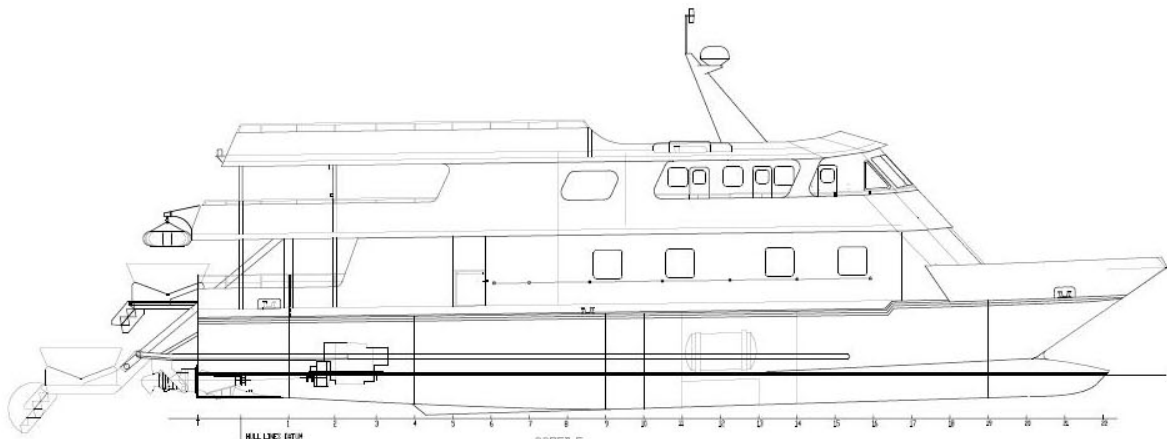
Overnight Dive Boat

Hull # S-109 – M/V Palau Aggressor II

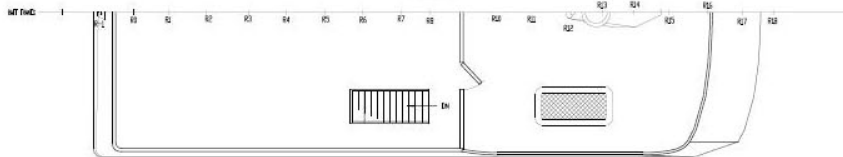


Specifications:

Length	100'	Main Engines ...	2 x 3412 Caterpillar @ 800 HP each
Beam	31'-6"	Auxiliary Engines	2 @ 120 KW each
Draft	6'-3"	Passengers	14
Fuel Capacity	4,000 Gallons	Crew	12
Water Capacity	1,000 Gallons	Speed	22 Knots



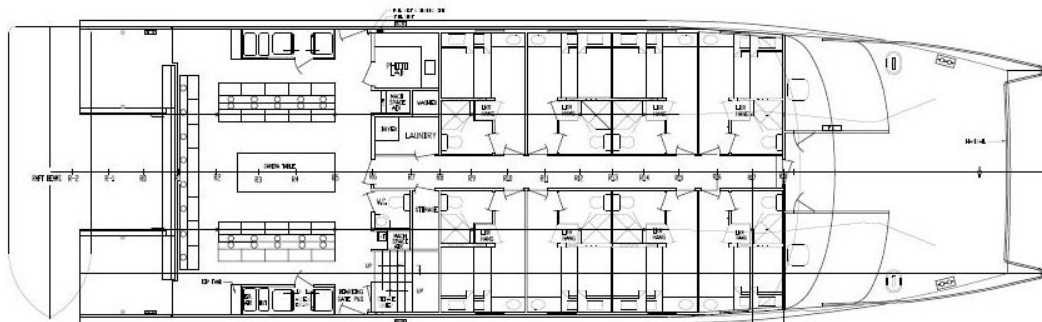
PROFILE



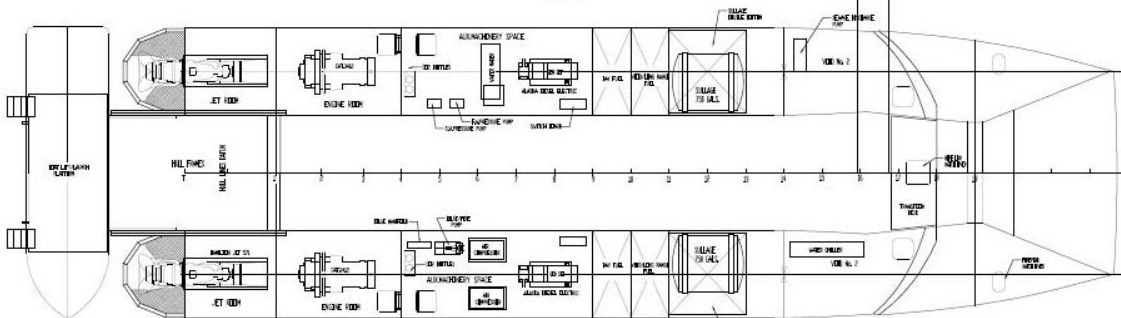
TIER 3



TIER 2



TIER 1



PLAN BELOW DECK



Nichols Brothers Boat Builders, Inc.
Phone: (360) 331-5500 – Fax: (360) 331-7484
www.nicholsboats.com – sales@nicholsboats.com